

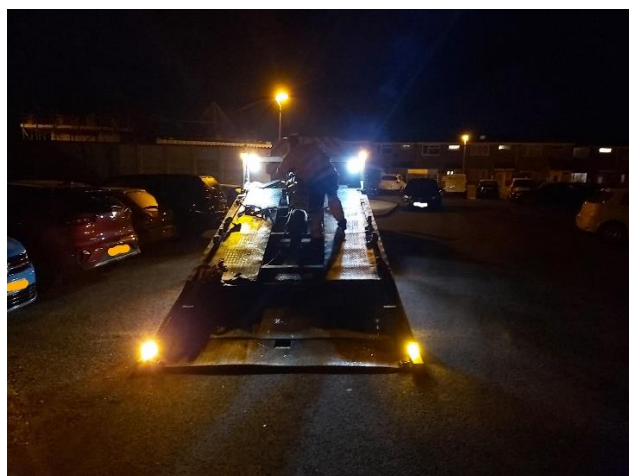


January 2022 Patrols

Firstly, we would like to wish the people of Witham a Happy New Year and hope that it brings a healthy and brighter outlook throughout the year. Our aim over this coming year is to provide more visibility and increased engagement with the easing of restrictions due to COVID and we also hope to see the return of the main events in the Town that bring the people together, like the Carnival and The Puppet Festival. To start the year, we will be supporting a new opportunity for residents to come and meet with Police Officers with the introduction of the “Essex Police Community Beat Surgery” which are to be held on a fortnightly basis on a Saturday at The Witham Community Hub in the Newlands Precinct and on a Tuesday at the Town Hall. Due to our roles as volunteers the Witham CSC team will generally attend the weekend meetings with the Witham Town Team Officers attending the weekday meetings. Across the district in the last month there has been an increase in burglaries, and we carried out additional patrols around the housing estates to provide a visible deterrent and reassurance to residents.

January 4th

Witham Special Constable Mabey & a Braintree Special Constable were out on patrol in Witham and began on Spa Road before moving on to the Humber Road estate. After high visibility patrols at this location, they then moved on to the Witham Town Park, River Walk, Maldon Road and then over to the other side of town to check on the recreation ground near to Cypress Road. While conducting their patrols, they received information that a stolen motorbike had been seen by a member of public parked outside their house. The resident had seen a post on social media and realised this was the same motorbike. On close inspection of the motorbike, the ignition had been tampered with and after completing the necessary checks, recovery was organised. The owner was informed that their stolen motorbike had been found and was pleased with their actions and thankful to the resident who spotted the motorbike. Please continue to report anything suspicious – you may help us to solve a crime.



[How to report a lost or stolen vehicle | Essex Police](#)

After recovery had been completed, they returned to Newland Street to conduct foot patrol where they were alerted that two vehicles connected with shoplifting offences were seen heading in towards the town after activating a nearby ANPR (Automatic Number Plate Recognition) camera. Returning to their vehicle they then assisted other units in successfully stopping these vehicles as they made their way towards Braintree.



January 7th

Witham CSC Officer Mabey set out to conduct high visibility patrols in Witham in company with a Braintree Special Constable, however, almost immediately on arriving in Witham they were directed to an assault & criminal damage in progress on one of the housing estates. On attendance a young person was arrested for the offences but had suffered an injury prior to the officer's arrival and they were taken to hospital as a precautionary measure before being taken to custody. With a duty of care to the young person this took the remainder of their shift and they were unable to return to Witham.

January 8th

The first of our new meetings was at The Witham Community Hub in the Newlands Precinct and it provided the opportunity for several people to speak with officers with a task taken away for further investigation. Our aim is to provide advice, reassurance and to record any crimes that may not otherwise be reported. Following the meeting Special Inspector Campbell & PC James Draper conducted foot patrol around the town including the Witham Town Park and the main shopping areas but due to the inclement weather there were very few people out and about.



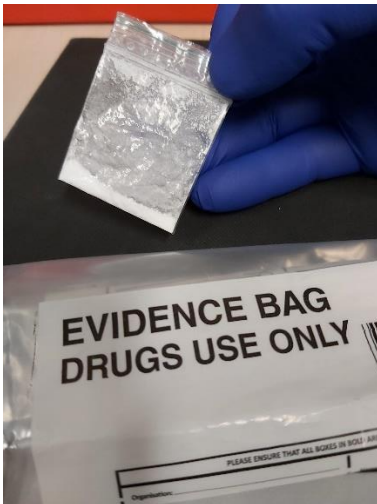
January 14th

Special Inspector Campbell, Special Constable Woollett and Myself all attended the Guithavon Valley Evangelical Church to meet with the Witham Boys Brigade. The purpose of the visit was to provide some positive engagement as Community Special Constables and demonstrate some of the equipment and expectations of our role. We provided some elements of uniform to try on, while demonstrating our operational kit, including handcuffs, radios, Body Worn Video and then answering questions from the group. For some outside activities we also provided a Carrier (the largest of our patrol vehicles) demonstrating the lights, shields and the cage at the rear, as well as a breath test device used as an indicator in drink driving offences and the speed camera with at least one driver recorded at 41mph on Guithavon Valley! We had some very good questions from the group and felt that we were able to promote our role in helping the Community.



January 20th

I was crewed with a Braintree Special who had just attested, and we commenced their first shift with a patrol in Witham. We began with a foot patrol on the Templars Estate, however due to the low temperature we did not see anyone out and about. We had a dual purpose for being on the estate however and we collected a small amount of suspected Class A drug (Cocaine) which had been found in the children's play area in the centre of the estate. This is a big concern for us and the residents and poses a high risk to young children in the area if accidentally ingested. We want to encourage people to report any suspicious substances found to us so that we can properly dispose of these but also to help us to determine where they came from and how we can prevent drug use or supply in the area.



From this area we then moved on to Cypress Road to check on previous anti-social behaviour locations and mobile patrols around Dorothy Sayers Drive, Laburnum Way and Forest Road for visibility and reassurance. We then headed into the Town Centre to carry out foot patrols in the Newlands Precinct, The Grove Centre, where we investigated suspicious activity near to the Royal Mail sorting depot, Witham Town Park and Newland Street. To conclude our duty, we then visited the Hatfield Road estate, Humber Road estate, Bramble road & Honeysuckle Way.



January 22nd

In company with Special Inspector Campbell, we attended the Community Beat Surgery at The Witham Community Hub in the Newlands Precinct. We had several visitors who wanted to discuss concerns in their local area, and we were able to record information for further investigation and provide advice on safeguarding and crime prevention. The session aims to provide a physical officer for people to engage with and share any issues. We also had several interactions with families with children, and we are really starting to see a positive impact of our visibility and accessibility.



At the end of the Surgery, we had a crew change with Special Inspector Campbell finishing but I was joined by Witham Community Special Constable Mabey & Braintree Special Constable Wintin. When we arrived back in Witham, we attended the Bluebell Woods on Rickstones Road following reports of a nuisance motorbike that was



causing alarm to dog walkers and families. Arriving on scene we spoke to several people who confirmed that there had been a moped/motorbike riding up and down the footways. Unfortunately, there was no sight of the rider any longer and after checking in the woods and the immediate area we returned to our vehicle. Please continue to report anti-social behaviour of this kind and include as much detail as possible to help us find the people responsible as we try to improve your community.



From this location we headed just down the road and carried out foot patrol on the Templars estate where we had some great engagement with children in the play area with SC Mabey showing off some skills on the basketball court. After being slightly outnumbered he conceded defeat and we returned to our vehicle to conduct mobile patrols towards the Town Centre. As we headed up towards Hatfield Road, we responded to a call for immediate assistance for a person in a serious mental health situation. On arrival an ambulance was already on scene but unable to enter the property due to safety concerns. Fortunately, we were able to enter the premises and quickly intervene to prevent further harm to the person while managing a very protective pet. To ensure the patient was ok during transport to hospital SC Mabey travelled in the ambulance and we followed up behind. On arrival at hospital the patient had responded well to the ambulance staff and we were able to resume our patrols back in Witham. SC Mabey finished his shift and I then continued with SC Wintin into the Town Centre for foot patrol. Our first stop took us to Battersford Court to report one of their customers committing anti-social behaviour outside of the premises and they were promptly barred. After walking up Newland Street we then called in to The White Hart, Charlie's Bar, The George and The Red Lion for reassurance and visibility. During these visits we were informed of a person who had been causing a nuisance in the different pubs in town throughout the day and had subsequently been barred from these locations, this information soon became relevant as we were first on scene to a disturbance at The Old Pottery Kiln at the other end of the Town involving this same person. With our presence already in Witham we were able to arrive within a couple of minutes and secure the person and prevent further offences until other units arrived. Once the alleged offences had been established a male was arrested and taken to custody.



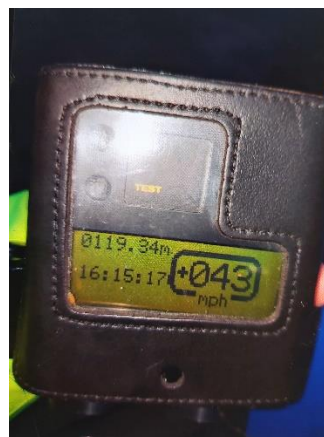


January 23rd

I was crewed with Special Constable Keys with our plan to carry out a number of speed surveys at different locations in Witham. Before we arrived at our first location, we were directed towards the A12 following reports that a goat had been seen close to the main carriageway. On arrival we did in fact find 5 goats that had escaped from a nearby small holding and entered a large field alongside the A12 which has no fencing potentially allowing them to wander towards the road. We were able to inform the owner who headed into the field and herded the goats back into their enclosure. We set up the first of our speed checks on Rickstones Road at the junction with Cross Road. In this location we had clear sight of the pedestrian crossing between the Templars estate and Dorothy Sayers Drive which is one of the focal points for our safety assessments. Over a period of approximately 40 minutes, we were able to record the speed of 100 vehicles which forms a survey which is submitted to the Roads Policing Department. This survey will then help to identify areas of concern for enhanced police action if required. We were very pleased to see that there were no high speeds recorded, although we were aware that some motorists travelling away from us were signalling to oncoming drivers of our presence. This is an offence and although it may be seen by some to help other drivers this will not prevent those same drivers from speeding again in the future and this may lead to a serious accident or fatality. Our actions of education and enforcement are the recognised methods to reduce speeds and increase public safety on your roads.

Due to other Police resources in the district already at other incidents we travelled out of Witham to attend a sudden and unexpected death.

We returned to Witham to carry out a further speed check on Maldon Road, however, almost immediately we were alerted by an off-duty police officer that there had been suspicious activity near to Tesco in The Grove Centre involving a bicycle and we headed off along Maldon Road where the suspect had headed. As we entered Laurence Avenue, we quickly located a person who was holding the bicycle while sitting astride an Electric Motorbike. On seeing our police vehicle, they threw the bicycle to the floor and rode off on the motorbike at high speed along the footpath towards Howbridge Road. This has been captured on my Body Worn Video for future action. We recovered the bicycle, and this has now been stored for safekeeping while we try to determine the owner. We then finally set up on Maldon Road to carry out our speed check and almost immediately we stopped a vehicle travelling at 37mph in the 30mph limit. This was followed quickly by another vehicle measured at 43mph and another at 40mph. All three drivers were approaching the town centre and the pedestrian crossing, which was highlighted during their stops, where we also check their insurance, condition of their vehicle and their licence details. We recorded 50 vehicles in a 45-minute time span but due to the three vehicle stops we missed further opportunities with several other drivers appearing to exceed the speed limit. The information from this survey will also be submitted to the Roads Police Team & Casualty Reduction Team for further action.



January 27th

There were three of the Witham Community Special Constable officers on duty with SC Mabey crewed with Braintree Special Constable Wintin & I was crewed with Witham CSC Officer Eaketts. We had intended to spend some of our patrol time close to each other to provide an increased presence in different locations as we moved around the town and the estates. My first task of the day was to return a bicycle that had successfully been identified by the owner following a social media appeal following an incident a few days earlier. With the safe return we then headed briefly over to Hatfield Peveler to meet with Eastlight Anti-Social Behaviour Coordinator and conduct a short patrol there before we all returned to Witham to conduct checks on an address identified for suspicious behaviour.



While we were in Hatfield Peveler SC Mabey & SC Wintin visited a young girl, who is unsure around Police and they wanted to provide a friendly face and show off some of the kit and the Police van. Judging by the smile on her face this was a lovely and positive engagement to continue to build her confidence.



We headed over to the Witham Town Football Club to rendezvous with SC Mabey and another Braintree Local Policing Team Unit to provide support for an enquiry on Honeysuckle Way. With significant resource we were able to investigate the report of a suspect on scene, but in this instance, there was no person present. We split up again and headed on to the Hatfield Road estate & disrupted an E-Scooter rider who made off from Philip Road onto the field and vanished from sight towards Stevens Road. Although we tried to get the other unit to that location the rider had disappeared into the darkness. As we headed back into towards the Town Centre there was an incident at The George Public House and SC Mabey & SC Wintin attended in less than 3 minutes, once again highlighting the benefit



of the Witham CSC team presence. SC Mabey & SC Wintin attended The George and dealt with allegations of an assault and although the victim had left the scene, was soon located in town. With the necessary checks completed they took the victim back to a place of safety to ensure their welfare.

We continued towards the town centre and stopped several drivers for advice on the condition of their car number plates which were totally obscured by road dirt. It is an offence to have your number plate obscured with a potential fine imposed, however, the benefit of having a clean number plate means that if a vehicle is stolen or involved in a collision, we have the best chance of being able to track it down. On leaving the Lidl carpark we then spotted the E-Scooter rider who was now carrying a passenger and although we initially tried to follow and stop them, they continued through the red light onto Spinks Lane and cut through the footpath up to the Hatfield Road estate. The rider showed absolutely no consideration for his safety or the passenger and it was fortunate that other vehicles on the road were able to take avoiding action to prevent a serious accident.

SC Mabey & SC Wintin finished their patrols on foot around the Templars estate and checked on Forest Road and Cypress Road before heading back to the station while SC Eaketts and Myself spotted a moped rider heading down the footpath towards the library without lights, cutting across the road without looking and then continued to ride along the opposite footpath. As the rider came to a stop it was quite clear that they were under the influence of alcohol and following a positive roadside breath test they were arrested and taken to Chelmsford custody for the evidential checks. In custody the rider failed to provide the required specimens, and this will now be processed accordingly.



January 29th

Witham Community Special Constable Mabey headed back to Witham for his next patrol beginning on the Humber Road estate, Spa Road and ASDA. There were very few people out and about, but he did stop and speak with the occupants of a lone car in the Witham Town Football Club car park. From this location he then moved up to the Hatfield Road estate but again there was very little activity with only dog walkers out in the cold night air. He then drove up towards the COOP garage where he was approached by a local resident concerned over a vehicle that had been parked nearby that didn't appear to have tax or insurance, but it had been seen driving around. With advice provided to report this online with details of the vehicle and driver SC Mabey was then joined by another Police unit from Braintree and they disrupted a drug deal involving a male on a bicycle. Although they carried out an extensive area search, they were unable to find the suspect. With instances like this of suspected drug dealing and anti-social behaviour please continue to report this to us with as much detail as possible so we can take positive action to improve your community.



SC Mabey then headed into the Town Centre where he was joined by the Local Policing Team, with both plain clothes and uniform officers patrolling the alleyways, park and shopping centres they provided significant visibility, reassurance and deterrence.



January 30th

I was crewed with SC Eaketts and we headed over to Witham to conduct speed checks on The Avenue, however, just as we set-up we were redirected to an intruder alarm at a nearby commercial premises on the Freebournes Industrial estate. Due to our presence in Witham, we were able to attend in under 2 minutes but fortunately this appeared to be a false alarm with no signs of forced entry.



With the alarm silenced following our checks we headed back to The Avenue and almost immediately we stopped a driver for 41mph in the 30mph limit. In this instance the driver had no previous warnings or convictions for speeding and therefore may be eligible for a speed awareness course to provide education over punishment. A second driver was also issued with a traffic offence report (TOR) after being recorded at 38mph and 4 other drivers were stopped for verbal warnings due to their speed, with many rushing on their way to a local football match with children in their cars. Please ensure you leave enough time to make your journey safely. We completed a check of 100 vehicles in this location which provides a snapshot survey which is reviewed for future further actions.

[Vision Zero: No more deaths on Essex roads – SERP \(saferessexroads.org\)](https://www.saferessexroads.org/)

[Speeding | Essex Police](#)



We then relocated to Hatfield Peverel to carry out a similar 100 vehicle check on Maldon Road with a further 3 drivers all given a traffic offence report. On our return to Witham, we attended an elderly resident who had been found wandering outside in the cold and with assistance from a family member who arrived just after us we were able to return the person home to warmth and safety. In this instance with the frailty of the person, response time is very important, and we were able to get to the location in under 5 minutes due to our presence in the Witham area as part of our patrols. We returned to the Town Centre for a short foot patrol providing directions to several eager children trying to locate the Games Arena before heading out to Kelvedon to arrange recovery for a vehicle left in a dangerous location following a previous incident. After a final sweep up by SC Eaketts we left the scene and finished our patrol.



This concludes the monthly report for January 2022.